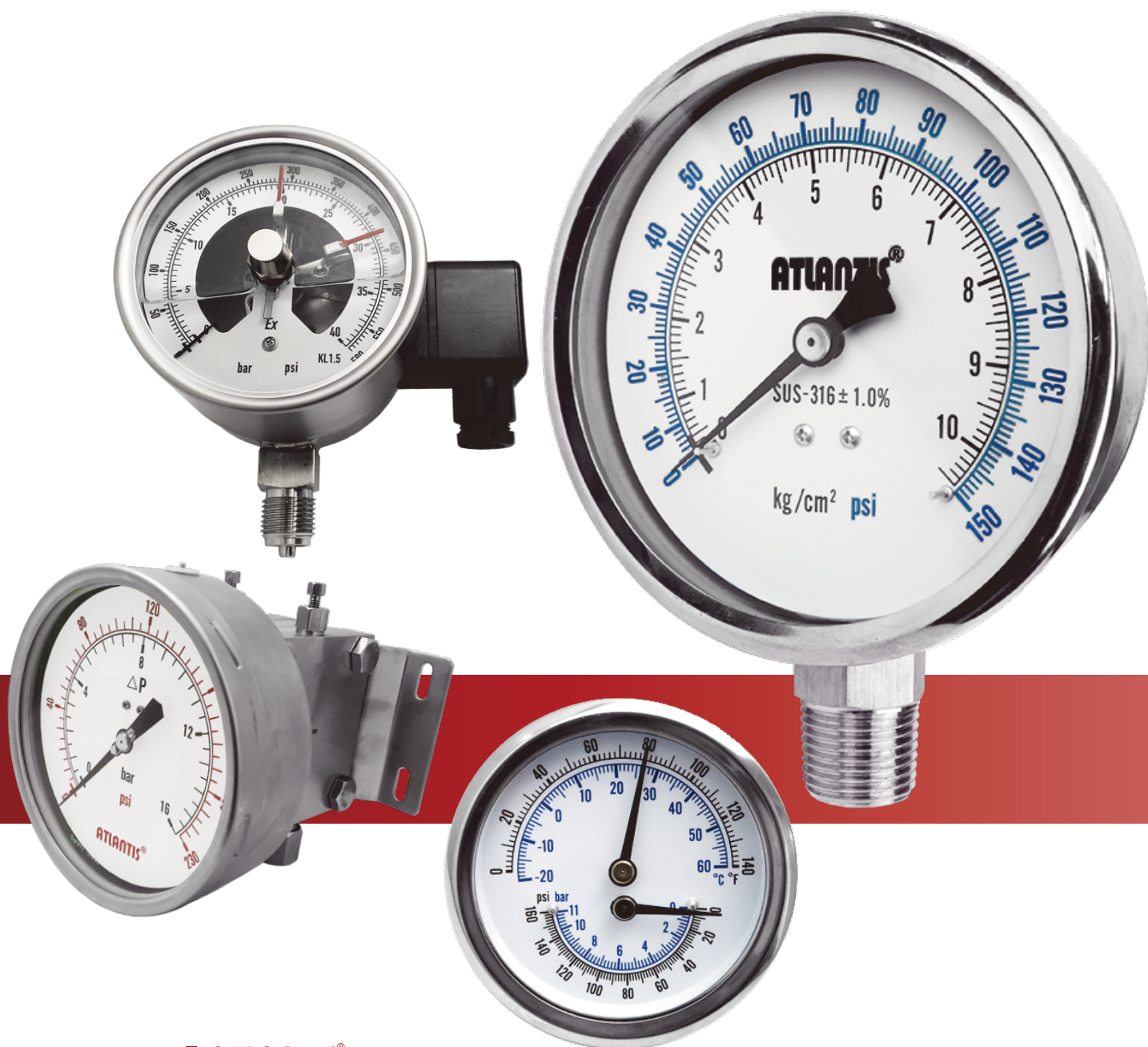


ATLANTIS®

RE-ATLANTIS INTERPRISE CO., LTD

MECHANICAL PRESSURE GAUGE AND GAUGE WITH SWITCH CONTACT CATALOG



ATLANTIS®

RE-ATLANTIS ENTERPRISE CO.,LTD.
1F, No.109, Sec. 2, Zhiyuan 1st Rd.,
Beitou District, Taipei City
TEL : +886-2-2820-3405
FAX : +886-2-2820-3406
<https://www.re-atlantis.com/>

Due to the variety of customization, the product pictures are only for your reference, please confirm the actual item appearances with our sales.
(If there is any change on specification, please take the latest version as standard.)

Ver.3.0



SFPC

Solid Front Pressure Gauge
(Phenolic Resin Type)

Application: Suitable for hazardous, high vibration frequency, and high pressure fluctuation environment.

Model: SFPC

Size: 4.5"

Pressure range: -1 ... 0 to 20 bar ;
0 ... 0.6 to 1600 bar

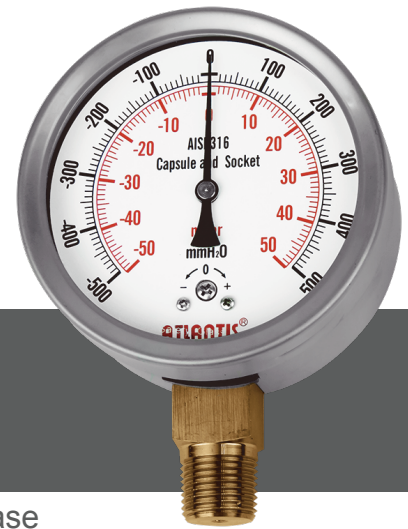
Measuring elements: SS304

Accuracy: 1.0%

Thread material: SS304

Window: Safety glass / Acrylic

Case: phenolic resin



MP-SC

Stainless Steel Case
Micro Pressure Gauge

Application: Suitable for micro pressure measurement.

Model: MP-SC

Size: 2", 2.5", 3", 4", 6"

Pressure range: 0...300 to 6000 mmAq ;
-6000...0 mmAq ; ±150 to ±3000 mmAq

Measuring elements: Copper alloy

Accuracy: 3.0% / 2.0%

Thread material: Copper alloy

Window: PC / Glass / safety glass



MP-SUS

All Stainless Steel Micro
Pressure Gauge

Application: Higher accuracy and protection level than general gauges, which specially design for measuring the micro pressure of corrosive media.

Model: MP-SUS

Size: 4", 6"

Pressure range: 0...160 to 6000 mmAq /
-6000...0 mmAq / ±80 to ±3000 mmAq

Measuring elements: SS316

Accuracy: 3.0% / 1.6%

Pressure connection: SS316

Window: Glass / Safety glass



HPPG-SUS

All Stainless Steel High Pressure Gauge

Application: Suitable for ultra-high pressure measurement, high vibration frequency and high pressure fluctuation environments.

Model: HPPG-SUS

Size: 4", 6"

Pressure range: 0 ... 400 to 4000 bar

Measuring elements: SS316

Accuracy: 1%

Thread material: SS316

Window: Safety glass



SF-SC

Stainless Steel Case Safety Pattern Pressure Gauge

Application: Suitable for high vibration frequency and high pressure fluctuation environments.

Model: SF-SC

Size: 4", 6"

Pressure range: 0...1 to 350 bar / -1...0 bar / -1...0 to 20 bar

Measuring elements: Copper alloy

Accuracy: 3.0%

Thread material: Copper alloy

Window: Safety glass



SF-SUS

All Stainless Steel Safe Pattern Pressure Gauge (with Blow-Out Back)

Application: Suitable for corrosive, high vibration frequency and high pressure fluctuation environments.

Model: SF-SUS

Size: 4", 6"

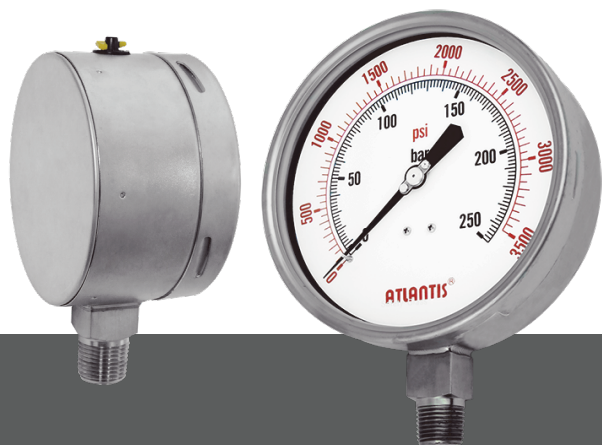
Pressure range: 0...0.6 to 1000 bar ; -1...0 bar ; -1...0 to 20 bar

Measuring elements: SS316

Accuracy: 1.0%

Thread material: SS316

Window: Safety glass



SFBO-SUS

All Stainless Steel Safety Pressure Gauge (with Blow-Out Back Plate)

Application: The blow-out back plate will eject once pressure over rating value. Suitable for strictly monitor overpressure requirement.

Model: SFBO-SUS

Size: 4", 6"

Pressure range: 0...0.6 to 1000 bar / -1...0 bar / -1...0 to 20 bar

Measuring elements: SS304 / Monel 400

Accuracy: 1.0%

Thread material: SS304

Window: Safety glass



SP-EPG

Black Steel Case Shockproof Dry Pressure Gauge

Application: It adopts diaphragm pressure sensors and shockproof pointer. Features shockproof, anti-vibration and anti-surge pressure without oil-filling.

Model: SP-EPG

Size: 1.5", 2", 2.5", 3.5"

Pressure range: 0...1 to 28 bar / -1...0 to 20 bar / -1...0 bar / -76...0 cmHg

Measuring elements: Diaphragm

Accuracy: 2.5% / 1.6% / 1.0%

Thread material: Copper alloy

Window: PC / glass / Acrylic



SP-SC

Stainless Steel Case
Shockproof Pressure Gauge

Application: Uses stainless steel dampened movement with excellent shockproof effect, Applicable for vibration but non-oil environment.

Model: SP-SC

Size: 4", 6"

Pressure range: 0...1 to 350 bar
-1...0 to 20 bar / -1...0 bar / -76...0 cmHg

Measuring elements: Copper alloy

Accuracy: 2.5% / 1.6% / 1.0%

Thread material: Copper alloy

Window: Tempered glass / Safety glass



ZSC-4.5

4.5 / 5" Stainless Steel Case Pressure Gauge
With Zero Adjustment

Application: Adjustment is suitable for general engineering or other application that required field pointer calibration.

Model: ZSC-4.5

Size: 4.5"

Pressure range: 0 ...2 to 28 bar

Measuring elements: Copper alloy

Accuracy: 2.5% / 1.6%

Thread material: Copper alloy

Window: PC



F-SC

Stainless Steel Case Refrigeration Gauge

Application: Suitable for pressure measurement in refrigeration systems, such as air condition, refrigerant filling machine, etc.

Model: F-SC

Size: 2.5"

Pressure range: -76cmHg...0... 250 to 500 psi /
0...500 to 800 psi

Measuring elements: Bronze (high pressure) /
Phosphor bronze (low pressure)

Accuracy: 2.5%

Thread material: Copper alloy

Applicable refrigerant: R12 / R22 / R502 / R404A
/ R410A / R507 / R134a



TMG-SUS

All Stainless Steel Thermo-manometer

Application: For boilers and water purification. Combined measurement for both pressure and temperature, reducing space and cost.

Model: TMG-SUS

Size: 2.5"

Pressure range: 0 ...1 to 16 bar

Temperature range: -50 ... 160°C

Measuring elements: SS304

Accuracy: 1.6% (pressure) / 1°C (temperature)

Thread material: SS304

Window: Glass

Stem length: 25mm

Protection level: IP65



ABS

Plastic Case Pressure Gauge

Application: Suitable in medical, vacuum, environmental engineering, HVAC and filtration system.

Model: ABS

Size: 1.5", 2", 2.5", 3", 4"

Pressure range: -1 ... to 20 bar /

0 ... 1 to 350 bar / -1...0bar / -76...0cmHg

Measuring elements: SS304 / Copper alloy

Accuracy: 3.0% / 2.5% / 1.6%

Thread material: SS304 / Copper alloy

Window: PC



SBG

Mini Pressure Gauge (Bourdon Tube Type)

Application: Pressure sensor adopts Bourdon tube ensuring better performance and service life than other mini gauges.

Model: SBG

Size: 1"(25mm) / 1"(25mm, hex case) / 1.1"(28mm) / 1.26"(32mm)

Pressure range: 0...2 to 28kg/cm²

Measuring elements: Copper alloy

Accuracy: 4.0% / 3.0%

Thread material: Copper alloy / Chrome-plated copper

Window: Glass



PHPG

Pressure Gauge with Peak Hold Pointer

Application: Peak hold pointer can record peak pressure value. With manually reset to zero function.

Model: PHPG

Size: 2.5", 4"

Pressure range: -1 ... to 20 bar /

0 ... 1 to 1000 bar / -1...0 bar

Measuring elements: Copper / Stainless steel

Accuracy: 1.6% / 1.0%

Thread material: Copper / Stainless steel

Window: PC / Glass



PR

Pressure recorder

Application: Single and dual pen circular pressure record.

Model: PR

Size: 8", 10", 12"

Pressure range: 0 ... 5 to 20 kg/cm²

Measuring elements: Copper alloy / Stainless steel

Accuracy: 1.5%

Thread material: SS304 / Copper alloy

Capillary: SS304

Window: Tempered glass

Recording period: 12 hours / 24 hours, 7 days/cycle



TPG-SUS

All Stainless Steel Precision
Test Pressure Gauge

Application: Suitable for calibration pumps or manifolds in testing laboratories and high accuracy required environments.

Model: TPG-SUS

Size: 6", 8"

Pressure range: -1 ... 0 to 20 bar /
0 ... 0.6 to 1000 bar / -1...0 bar

Measuring elements: SS304 /
50 chromium-vanadium steel

Accuracy: 0.4% / 0.25% / 0.16%

Thread material: SS304

Window: PC



LS-SUS

All Stainless Steel
Large Size Pressure Gauge

Application: Suitable for larger machine (such as boiler) which has remote distance from observer.

Model: LS-SUS

Size: 8", 10"

Pressure range: -1 ... 0 to 20 bar / -1...0 bar /
0 ... 0.6 to 1000 bar

Measuring elements: SS304

Accuracy: 1.0% / 0.5%

Thread material: SS304

Window: PC



HCPG

High Purity Pressure
Gauge

Application: Pure gas pressure measurement.
Suitable in semi-conductor and pharmaceutical
industry.

Model: HCPG

Size: 1.5", 2"

Pressure range: 0 to 350 bar / -1...0 to 24 bar

Measuring elements: SS316 / SS316L / SS316Ti

Accuracy: 2.5% / 1.5%

Thread material: SS316

Window: PC



EPG

Black Steel Case Pressure Gauge

Application: With multiple choices of size and
installation type, applicable for measuring
noncorrosive media that compatible with copper alloy.

Model: EPG

Size: 1.5", 2", 2.5", 3", 4", 6"

Pressure range: 0...0.6 to 350 bar / -1...0 to 20 bar /
-1...0 bar / -76...0 cmHg

Measuring elements: Copper alloy

Accuracy: 3.0% / 2.5% / 1.6%

Thread material: Copper alloy

Window: PC / Glass



SUS

All Stainless Steel
Pressure Gauge

Application: Suitable for corrosive and normal environments. Shockproof movement available.

Model: SUS

Size: 1.5", 2", 2.5", 3", 4", 6", 8", 10"

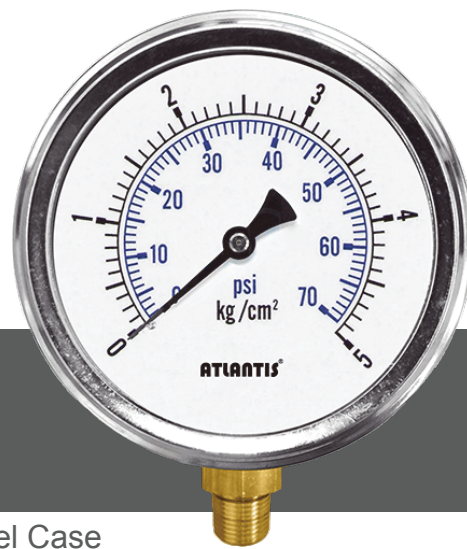
Pressure range: 0...0.6 to 1000 bar /
-1...0 to 20 bar / -1...0 bar / -76...0 cmHg

Measuring elements: Stainless steel

Accuracy: 2.0% / 1.5% / 1.0%

Thread material: SS316

Window: PC / Glass



SC

Stainless Steel Case
Pressure Gauge

Application: Particularly used in hydraulics, compressors, general mechanical engineering, pumps, water treatment plants

Model: SC

Size: 1.5", 2", 2.5", 3", 4", 6"

Pressure range: 0...0.6 to 1000 bar /
-1...0 to 20 bar / -1...0 bar / -76...0 cmHg

Measuring elements: Copper alloy

Accuracy: 2.0% / 1.5%

Thread material: Copper alloy

Window: PC / Glass



AM-SUS

All Stainless Steel Refrigeration
Ammonia Gauge

Application: Are specially designed for measuring liquid and gas that contain ammonia.

Model: AM-SUS

Size: 2.5", 3", 3.5", 4"

Pressure range: -30 inHg...0...150 psi to 300 psi

Measuring elements: SS316

Accuracy: 1.6% / 1.0%

Thread material: SS316

Welded connection

Window: PC / Tempered glass / Safety glass



MP-SUS-L

All Stainless Steel Micro Pressure Gauge
(Liquid-filling Type)

Application: Oil-filled micro pressure gauge with high protection level and accuracy. Suitable for micro pressure measurement. Applicable for corrosive media.

Model: MP-SUS-L

Size: 4", 6"

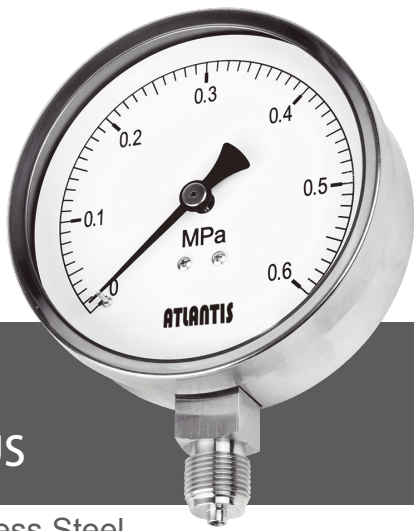
Pressure range: 0...300 to 6000 mmAq

Measuring elements: SS304

Accuracy: 3.0% / 2.0%

Thread material: SS304

Window: PC / Acrylic / Safety glass



SPG-SUS

All Stainless Steel
Steam Pressure Gauge

Application: Is suitable for measuring the steam pressure in the boiler or water tank, can accurately measure the boiler or tank vapor pressure value.

Model: SPG-SUS

Size: 4"

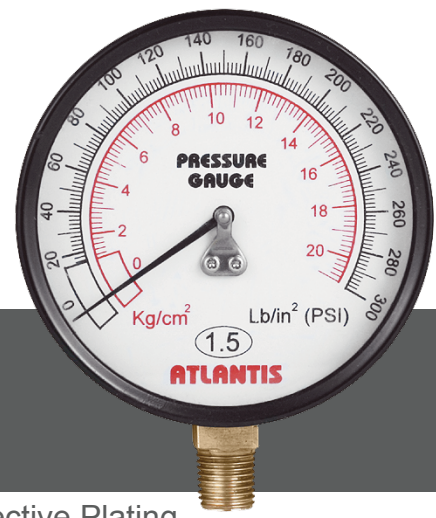
Pressure range: -1...0 to 1000 bar

Measuring elements: SS316L

Accuracy: 1.6%

Thread material: SS316

Window: Glass



HCP-EPG

High Cost-Effective Plating
Pressure Gauge (Diaphragm Type)

Application: Adopts heat treatment stainless steel diaphragm, Which can measure high pressure and ensure its service life and performance.

Model: HCP-EPG

Size: 2", 2.5", 3.5", 4.5"

Pressure range: 0~30 inHg~400 psi

Measuring elements: Copper alloy

Accuracy: 3%-2%-3%

Thread material: Copper alloy

Window: Glass / Acrylic



CVT

Can Vacuum Tester

Application: Specially designed for testing can vacuum.

Model: CVT

Size: 2.5"

Pressure range: -76...0 cmHg

Measuring elements: Copper alloy

Accuracy: 2.0%

Thread material: Copper alloy

Window: PC



SF-0.5AC

Aluminum Case Solid Front
Pressure Gauge

Application: SAdopts aluminum case with stainless steel measuring system. The solid front design is reinforced at the front, providing a blow-out back safety case design.

Model: SF-0.5AC

Size: 4.5", 6"

Pressure range: 0...0.6 to 1400 bar / -1...0bar / -1...0 to 20bar

Measuring elements: SS304

Accuracy: 0.5%

Thread material: SS304

Window: PC / Glass



MDB

All Stainless Steel Differential Pressure Gauge
(Double Bourdon Tubes Type)

Application: Suitable for differential pressure measurement in heater, ventilation and air conditioning system.

Model: MDB

Size: 4", 6"

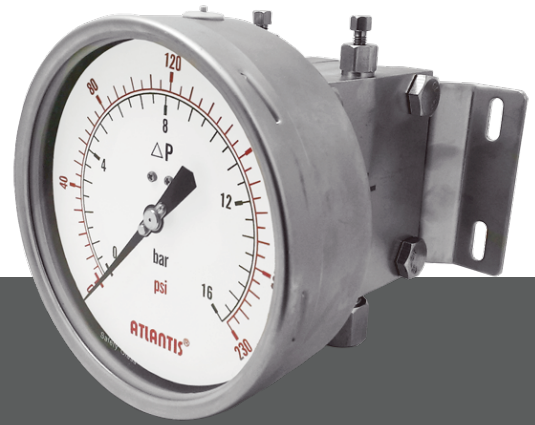
Pressure range: 0...1 to 60 bar

Measuring elements: SS304

Accuracy: 2.5% / 1.6%

Thread material: SS304

Window: PC / Acrylic / Safety glass



MDD

All Stainless Steel Differential Pressure Gauge
(Diaphragm Type)

Application: Suitable for differential pressure measurement that single side pressure is less than 400bar.

Model: MDD

Size: 4", 6"

Pressure range: 0...0.1 to 25 bar

Measuring elements: SS316

Accuracy: 2.5% / 1.6%

Thread material: SS316 / SS304

Window: General glass / Safety glass

Maximum static pressure: 400bar



MDX

All Stainless Steel Differential Pressure Gauge
(Bellow type)

Application: Is suitable for measuring the differential pressure of liquid, gas and steam from same or different pressure source.

Model: MDX

Size: 4", 6"

Pressure range: 0...0.1 to 50bar

Measuring elements: SS316

Accuracy: 3.0% / 2.0%

Thread material: SS316

Window: PC / Safety glass / Tempered glass

Maximum static pressure: 200bar



MDI-SDDB

All Stainless Steel Differential Pressure Gauge
(Single Diaphragm, Dual Bellows Type)

Application: Suitable for same or different pressure sources measurement in non-crystallized and nonsolidified liquid, gas and steam that compatible with connection's material.

Model: MDI-SDDB

Size: 4", 6"

Pressure range: 0 ... 50 to 5000 kPa

Measuring elements: SS316

Accuracy: 2.5% / 1.6%

Thread material: SS304 / SS316

Window: PC / Glass

Maximum static pressure: 40bar



MDB-DPDB-SC

Stainless Steel Case Differential Pressure Gauge (Dual Pointers & Bourdon Tubes Type)

Application: Suitable for differential pressure measurement that single side pressure is less than 1.3*full scale.

Model: MDB-DPDB-SC

Size: 4", 6"

Pressure range: 0 ... 6 to 600 bar

Measuring elements: Copper alloy

Accuracy: 1.6%

Thread material: Copper alloy

Window: PC / Glass

Maximum static pressure: 0.75* full scale



MDH-90EXC

Differential Pressure Gauge (Magnetic Piston Type)

Application: Suitable for measuring the differential pressure of fluid which contains non-magnetic particles such as filter, pump, piping and cooling system.

Model: MDH-90EXC

Size: 2.5", 3", 4", 4.5", 6"

Pressure range: 0...9 to 100 psi

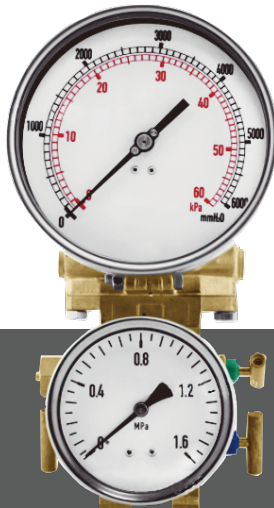
Measuring elements: Magnetic piston / Diaphragm

Accuracy: 3.0% / 2.0%

Thread material: SS316

Window: Safety glass

Maximum static pressure: 400 bar



LDPG-LTHP

Low Temperature Level Differential Pressure Gauge

Application: Is generally used in low temperature equipment, filter equipment monitoring, pump monitoring, closed pressure storage tanks and other places in the refrigeration industry.

Model: LDPG-LTHP

Size: 150mm, 101mm

Pressure range: 0 ... 10 to 100 kPa

Measuring elements: NBR / SS316 / 65Mn

Accuracy: 2.5% / 1.6%

Thread material: Copper alloy

Window: Glass

Maximum static pressure: 5 MPa



SF6-DS

All Stainless Steel Gas Density Monitor

Application: To continually monitor fluid density.

Model: SF6-DS

Size: 4"

Pressure range: -1 to 6 ...9 bar

Measuring elements: SS316

Accuracy: 2.5% / 1.5%

Thread material: SS316

Window: Safety glass

Max. voltage: 380 VAC & 220 VDC

Protection level: IP65

Leak rate: $\leq 1 \times 10^{-5}$ (mbar/s)



ECI-LP

Explosion-proof Micro Pressure Gauge with
Switch Contact (Inductive Switch Type)

Application: Inductive contact ensures there is no spark generated when measuring pressure to prevent pressure switch from explosion.

Model: ECI-LP

Size: 4", 6"

Pressure range: 0...400 to 10000 mmH₂O /
-1...0 to 10000 mmH₂O / -1...0bar / -76...0 cmHg

Measuring elements: SS316

Accuracy: 2.5% / 1.6% / 1.0%

Thread material: SS316

Window: Safety glass

Max operating voltage: 380VAC / 220VDC

Explosion-proof level: Exib II CT6