

Main Specifications

▼ **Pressure connection**
 Material: stainless steel
 Thread spec.: G1/4"
 ▼ **Adjustable set point range**
 -0.1 ~ 8MPa
 For detail please refer to adjustable set point range table
 ▼ **Dead band**
 Adjustable/Fixed dead band
 For detail please refer to adjustable set point range table
 ▼ **Applicable fluid**
 Liquid and gas that compatible with stainless steel
 ▼ **Ambient temperature**
 -40°C to +55°C
 ▼ **Fluid temperature**
 +120°C
 ▼ **Operating viscosity**
 $1 \times 10^{-3} \text{m}^2/\text{s}$
 ▼ **Vibration-proof performance**
 Max. $40 \text{m}/\text{s}^2$
 ▼ **Protection level**
 IP65

Other Specifications

▼ **Installation**
 Lower mount
 ▼ **Case**
 Die casting aluminum
 ▼ **Measuring elements**
 Bellow
 Material: SS316L
 ▼ **Switch type**
 Micro switch SPDT /
 Micro switch 2 CKT DB
 ▼ **Contact rating**
 SPDT:
 5~15A, 600VAC
 0.5A, 125VDC
 2CKT DB:
 15-125A, 600VAC
 ▼ **Switching frequency**
 20/min
 ▼ **Max operating pressure**
 0.6 / 1.2 / 2.0 / 2.5 / 5 / 8 /
 8.5MPa
 (Vary from set point range)
 ▼ **Repeatability**
 ±1%
 ▼ **Service life**
 2×10^5 cycles
 ▼ **Other requests (Option)**
 Third party notarized documents
 Inspection report (issued by Re-Atlantis)
 Tag

Mechanical Pressure Switch (High Contact Rating Type)

Model: AT100-7D

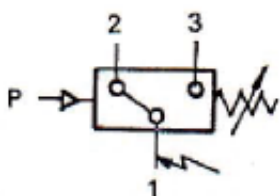
Introduction

AT100-7D pressure switch adopt SS316L bellow pressure sensor, which can apply to non-corrosive media such as neutral gas and liquid pressure monitor and control.



Due to the variety of customization, the picture is only for reference, please confirm the actual item with our sales. (If there is any change on specification, please take the latest version as standard.)

SPDT micro switch working principle



Terminal 1-3:
 Close circuit when pressure is increased to setting pressure value

Terminal 1-2:
 Open circuit when pressure is increased to setting pressure value

Features

- OEM service
- Adjustable set point range -0.1...0~ 8 MPa
- Pressure sensor adopts SS316L bellow
- Adjustable dead band types are available
- SPDT and 2 CKT DB micro switch
- Protection level IP65

Adjustable Set Point Range (Fixed Dead Band, Micro switch SPDT) Table

Order code	Adjustable Set point range (MPa)	Dead band limit (MPa)	Maximum operating pressure (MPa)	Switching frequency per minute	Dimension
A1	-0.1~0.1	0.004	0.6	20	01
A2	0~0.16	0.004	0.6		
A3	0.02~0.25	0.006	1.2		
A4	0.02~0.4	0.01	1.2		
A5	0.03~0.6	0.015	1.2		
A6	0.03~1.0	0.02	2.0		02
A7	0.05~1.6	0.03	2.5		
A8	0.05~2.5	0.05	5		
A9	0.3~4	0.08	8		
A10	0.5~8	0.2	8.5		

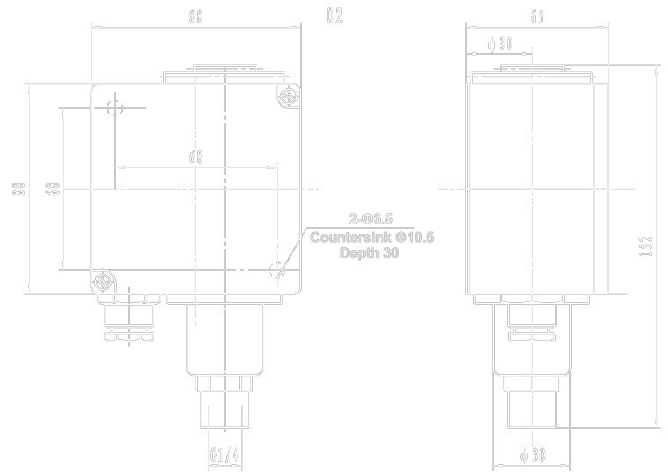
Adjustable Set Point Range (Adjustable Dead Band, Micro switch SPDT) Table

Order code	Adjustable Set point range (MPa)	Dead band limit (MPa)	Maximum operating pressure (MPa)	Switching frequency per minute	Dimension
B1	-0.1~0.1	0.015~0.08	0.6	20	01
B2	0~0.16	0.015~0.08	0.6		
B3	0~0.25	0.02~0.1	1.2		
B4	0.02~0.4	0.03~0.15	1.2		
B5	0.03~0.6	0.04~0.2	1.2		
B6	0.03~1.0	0.06~0.3	2.0		02
B7	0.05~1.6	0.08~0.5	2.5		
B8	0.05~2.5	0.12~0.7	5		
B9	0.3~4	0.15~1.0	8		
B10	0.5~8	0.5~1.0	8.5		

Adjustable Set Point Range (Adjustable Dead Band, 2 CKT DB) Table

Order code	Adjustable Set point range (MPa)	Dead band limit (MPa)	Maximum operating pressure (MPa)	Switching frequency per minute	Dimension
C1	-0.1~0.1	0.018~0.08	0.6	20	01
C2	0~0.16	0.018~0.08	0.6		
C3	0~0.25	0.025~0.1	1.2		
C4	0.02~0.4	0.04~0.15	1.2		
C5	0.03~0.6	0.05~0.2	1.2		
C6	0.03~1.0	0.07~0.3	2.0		02
C7	0.05~1.6	0.1~0.5	2.5		
C8	0.05~2.5	0.14~0.7	5		
C9	0.3~4	0.18~1.0	8		
C10	0.5~8	0.25~1.5	8.5		

Dimension



How to order

AT100-7D		Mechanical Pressure Switch (High Contact Rating Type)	
	Code	Set point range and dead band	
	B3	Please refer to adjustable set point range (fixed/adjustable dead band) table and select corresponding order code	
	Code	Pressure connection	
	2G	G1/4"	
	O	Others (please specify)	
	Code	Switch type	
	P	SPDT micro switch	
	2C	2 CKT DB micro switch	
AT100-7D	B3	2G	P
Order example: AT100-7D-B3-2G-P			