

Main Specifications

▼ **Size**
4"

▼ **Installation type**
Bottom mount (A)
Back mount with flange (Centric thread) (BDC)

▼ **Pressure connection**
Thread specification:
M20*1.5, G1/4" , G1/2" ,
1/4" PT, 1/4" NPT
Material:
SS304 / SS316 / SS316L
Other thread specification are available made-to-order

▼ **Pressure type**
Gauge pressure
Vacuum pressure
Compound pressure

▼ **Pressure range**
Please refer to pressure range table

▼ **Applicable media**
Liquid and gas that compatible with pressure connection

▼ **Ambient temperature**
-10~100°C

▼ **Operating temperature**
-10~80°C

▼ **Temperature compensation**
-10~80°C

Other Specifications

▼ **Case material**
SS304 / SS316L

▼ **Screen display**
LCD 5-digit screen display with white backlight

▼ **Power supply**
Lithium battery / 3A battery

▼ **Measuring element**
Diffused silicon

▼ **Pressure unit**
MPa, kg/cm², kPa, psi, bar (Standard)
mH₂O, mmHg (Option)

▼ **Accuracy**
±0.4%F.S. (Standard)
(Option: ±0.1% F.S. / ±0.2% F.S. / ±0.5% F.S. / ±1.0% F.S.)

▼ **Overpressure**
150%

▼ **Other requests (Option)**
Third party notarized documents
Inspection report
Tag
Other pressure unit
mH₂O, mmHg

Digital Pressure Gauge

Model: DPG-GH Series

Introduction

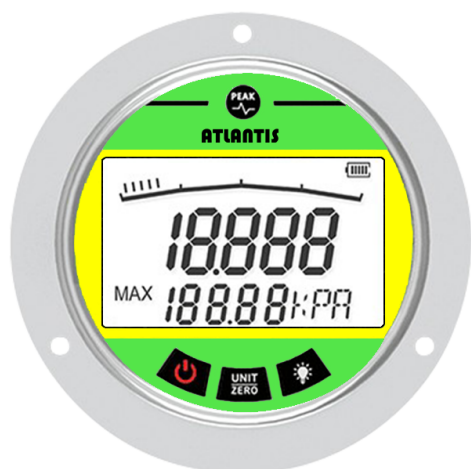
DPG-GH Series digital pressure gauge adopts diffused silicon as measuring element, features wide pressure range and highest accuracy can up to 0.1%. It is suitable for hydraulic, oil, and air pressure measurement.



Bottom mount



Due to the variety of customization, the picture is only for reference, please confirm the actual item with our sales. (If there is any change on specification, please take the latest version as standard.)



Back mount with flange (Centric thread)

Features

- OEM service
- 5-digit LCD screen display with white backlight (Other backlight color is available made-to-order)
- Highest accuracy up to 0.1%
- Switchable pressure unit up to 7
- Temperature compensation function
- Peak-hold function
- A key to zero function

Pressure range table

Code	Gauge pressure	Code	Vacuum pressure	Code	Compound pressure	Code	Shockproof type
G1	0~10kPa	V	-100~0kPa	C	-100~100kPa	S1	0~20MPa
G2	0~20kPa					S2	0~30MPa
G3	0~50kPa					S3	0~50MPa
G4	0~100kPa					S4	0~100MPa
G5	0~200kPa						
G6	0~0.6MPa						
G7	0~1MPa						
G8	0~1.6MPa						
G9	0~2.5MPa						
G10	0~6MPa						
G11	0~10MPa						
G12	0~16MPa						
G13	0~0.6MPa*						
G14	0~1.0MPa*						
G15	0~1.6MPa*						
G16	0~2.5MPa*						
G17	0~5MPa*						

*Accuracy 1% only with size 2.5"

How to order

DPG-GH Series Digital Pressure Gauge									
Std.	Spec.	Code	Item	Code	Item	Code	Item	Code	Item
04	Size	04	4"	-	-	-	-	-	-
A	Installation type	A	Bottom mount	BDC	Back mount with flange (Centric thread)	-	-	-	-
2G	Thread specification	M	M20*1.5	2G	G1/4"	4G	G1/2"	2P	1/4" PT
		2N	1/4" NPT	O	Others	-	-	-	-
304	Thread material	304	SS304	316	SS316	316L	SS316L	-	-
G1	Pressure range	Please refer to pressure range table to select corresponding code							
304	Case material	304	SS304	316	SS316	316L	SS316L	-	-
L	Power supply	L	Lithium battery	3A	3A battery	-	-	-	-
04	Accuracy	04	±0.4%F.S.	01	±0.1%F.S.	02	±0.2%F.S.	05	±0.5%F.S.
		10	±1.0%F.S.	-	-	-	-	-	-
/B	Other requests	/A	Third party notarized document						
		/B	Inspection report (issued by Re-Atlantis)						
		/C	Tag						
			Other pressure units						

Order example: DPG-GH - 04 - A - 2G - 304 - G1 - 304 - L - 04 - /B