

Main Specifications

▼Material

SS316

Other Material specifications
please specify before order

▼Flushing Connection

1/2" NPT

1/4" NPT

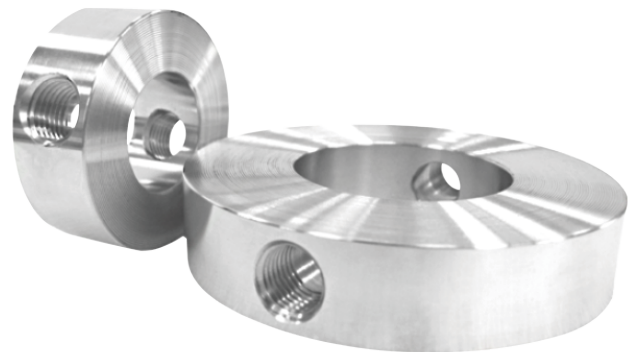
Other specifications please specify
before order

Flushing Rings

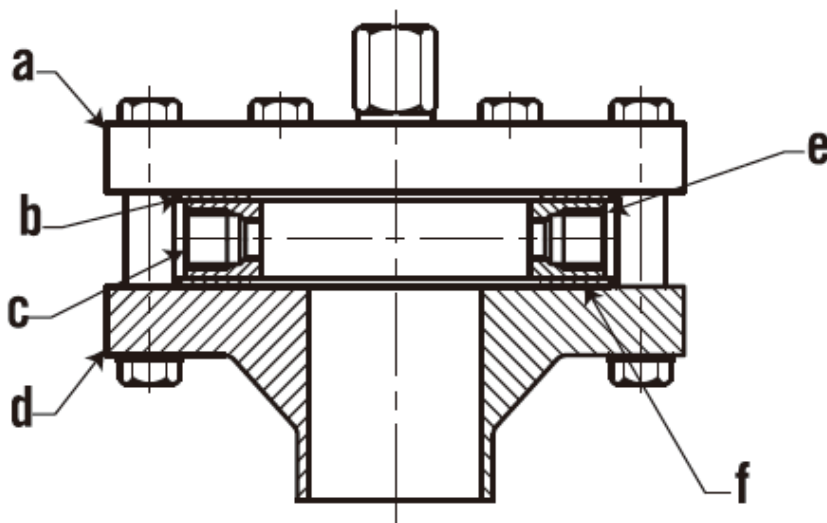
Model: FR

Introduction

FR for flange type can be mounted between the process connection and the diaphragm seal for flushing or venting the space in front of the membrane of the diaphragm seal. The two flushing ports allow to wash out particles accumulated in front of the membrane, and the pressure space can be vented.



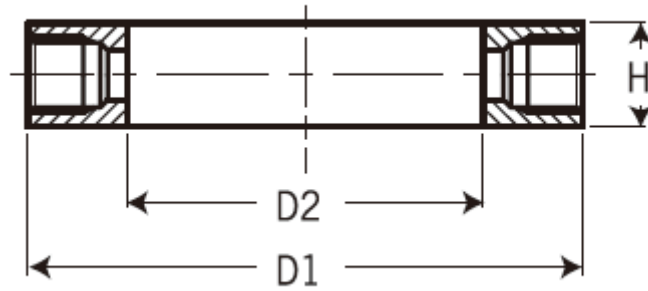
Due to the variety of customization, the picture is only for reference, please confirm the actual item with our sales. (If there is any change on specification, please take the latest version as standard.)



Parts List

No.	Description of Parts
a.	Diaphragm Seal Flange
b.	Sealing
c.	Flushing Connection 1/2" NPT
d.	Process Flange
e.	Flushing Ring
f.	Sealing

Dimensions



EN1092-1

Connection Size		Dimensions			
DN	Class	D1	D2	H(1/2")	H(1/4")
25	16...600	68	34	30	19
40	16...600	88	42	30	19
50	16...600	102	62	30	19
80	16...600	138	92	30	19
100	16...600	162	92	30	19
125	16...600	188	126	30	19

Unit : mm

ASME B16.5

Connection Size		Dimensions			
NSP	Class	D1	D2	H(1/2")	H(1/4")
3/4"	16...600	60	27	30	19
1	16...600	63.5	34	30	19
1-1/2"	16...600	73	42	30	19
2"	16...600	92	62	30	19
3"	16...600	127	92	30	19
4"	16...600	157	92	30	19
5"	16...600	185.5	126	30	19

Unit : mm