

Main Specifications

- ▼ **Diameter of differential pressure level gauge**
150mm, 101mm
- ▼ **Installation type**
Install with four M8 fixed holes or adopt back type fixed plate
- ▼ **Window**
Glass
- ▼ **Pressure connection**
Material: Copper alloy
Spec.: G1/4" , M20x1.5
Other spec. are available made-to-order
- ▼ **Connection distance**
Standard: 37mm
Option: 50mm / 54mm
- ▼ **Differential pressure measurement range**
0...10 to 100kPa
- ▼ **Applicable media**
Non-corrosive and non-crystalline liquid or gas compatible with copper alloy
- ▼ **Ambient temperature**
-40 to 60°C
- ▼ **Media temperature**
-40 to 60°C
- ▼ **Protection level**
IP65

Other Specifications

- ▼ **Case material**
SS304
- ▼ **Measuring chamber material**
Copper alloy
- ▼ **Pointer**
Iron with black enamel, zero set pointer
- ▼ **Dial**
Aluminum white panel with black scale
- ▼ **Output signal**
4~20mA
- ▼ **Movement**
SS304
- ▼ **Measuring elements**
Diaphragm
Material: NBR / SS316 / 65Mn
- ▼ **Accuracy**
±2.5% F.S.
(Positive and negative end measure differential pressure gauge)
±1.6% F.S.
(Negative pressure end measures pressure gauge)
- ▼ **Max. static pressure**
5MPa
- ▼ **Other requests (Option)**
Third party notarized documents
Inspection report
Tag
3 valve set
5 valve set
Connection distance converter
Wetted part degreasing treatment

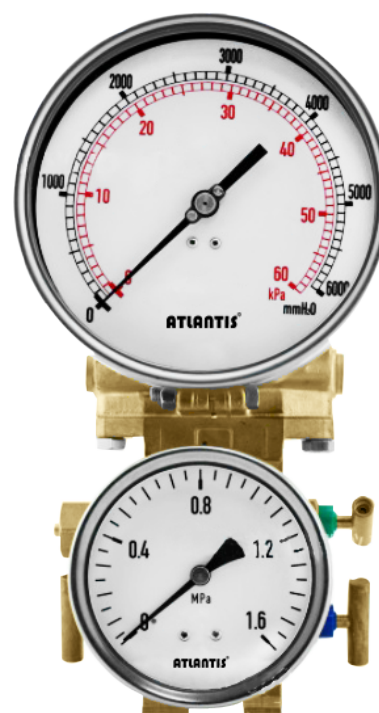


Low Temperature Level Differential Pressure Gauge

Model: LDPG-LTHP

Introduction

LDPG-LTHP low temperature level differential pressure gauge is suitable for non-viscous crystallization, liquid and gas medium level measurement compatible with copper alloys, and is generally used in low temperature equipment, filter equipment monitoring, pump monitoring, closed pressure storage tanks and other places in the refrigeration industry.



Due to the variety of customization, the picture is only for reference, please confirm the actual item with our sales. (If there is any change on specification, please take the latest version as standard.)

Features

- Designed for low temperature equipment, indicating current level difference on site
- Differential pressure measurement range: 0...10 to 100kPa
- Max. static pressure 5MPa
- 4-20mA remote signal output
- Connection distance converter is optional upon request
- 3 or 5 valve sets are optional to use with differential pressure gauge

How to order

LDPG-LTHP Low Temperature Level Differential Pressure Gauge									
Std.	Spec.	Code	Item	Code	Item	Code	Item	Code	Item
M8	Installation type	M8	M8 fixed hole *4	BD	Back type fixed plate	–	–	–	–
2G	Pressure connection	2G	G1/4"	M20	M20*1.5	O	Others	–	–
37	Connection distance	37	37mm	50	50mm	54	54mm	–	–
NBR	Diaphragm material	NBR	NBR	316	SS316	Mn	65Mn	–	–
/B	Other requests	/A	Third party notarized document						
		/B	Inspection report (issued by Re-Atlantis)						
		/C	Tag						
		/D	3 valve set						
		/E	5 valve set						
		/F	Connection distance converter						
		/G	Wetted part degreasing treatment						

Order example: LDPG-LTHP - M8 - 2G - 37 - NBR - /B