

Main specifications

▼ Size

4" ,6"

▼ Installation type

Bottom mount (A)/
 Bottom mount with flange (B)/
 Back mount (eccentric thread) (ADE)/
 Back mount with flange
 (eccentric thread) (BDE)/
 Back mount with U-Clamp
 (Eccentric thread) (UDE)/
 Back mount with flange and
 U-Clamp (Eccentric thread) (UBDE)

▼ Window

Glass / Safety glass

▼ Pressure connection

Material: SS316

Thread size:

1/4" , 3/8" , 1/2"

Thread type:

BSPT, NPT, PF

Other thread specifications
 please specify before order

▼ Pressure range

Gauge pressure ▼

4" : 0...160 to 6000 mmAq

6" : 0...25 to 6000mmAq

Negative pressure ▼

-6000...0 mmAq

Compound pressure ▼

4" : ±80 to ±3000mmAq

6" : ±15 to ±3000mmAq

▼ Applicable fluid

Liquid and gas that compatible
 with SS316

▼ Ambient temperature

-20°C to +60°C

▼ Fluid temperature

+100°C

▼ Temperature drift

Every ±12 °C

max. error: ±0.3% F.S

▼ Protection level

IP54 (Option: IP65)

Other Specifications

▼ Ring material

Stainless steel

▼ Ring mount

Inside bayonet

▼ Case

SS304

With air outlet

▼ Pointer

Aluminum with black enamel

▼ Dial fact

Blue & black scale

Adjustable screw on dial face

Pressure unit, scale & color can
 be customized upon request

Micro pressure unit ▼

kPa, mbar, mmH₂O, mmAq,mmWC, inH₂O

▼ Measuring elements

Capsule

Material: SS316

▼ Movement

Stainless steel

▼ Accuracy

±3% (Option: ±1.6%)

▼ Operating pressure

Stabilization: 3/4* full scale

Fluctuation: 2/3* full scale

All Stainless Steel Micro Pressure Gauge Model: MP-SUS

Introduction

MP-SUS pressure gauge is suitable for slightly
 corrosive media micro pressure measurement in
 sanitary required environment.

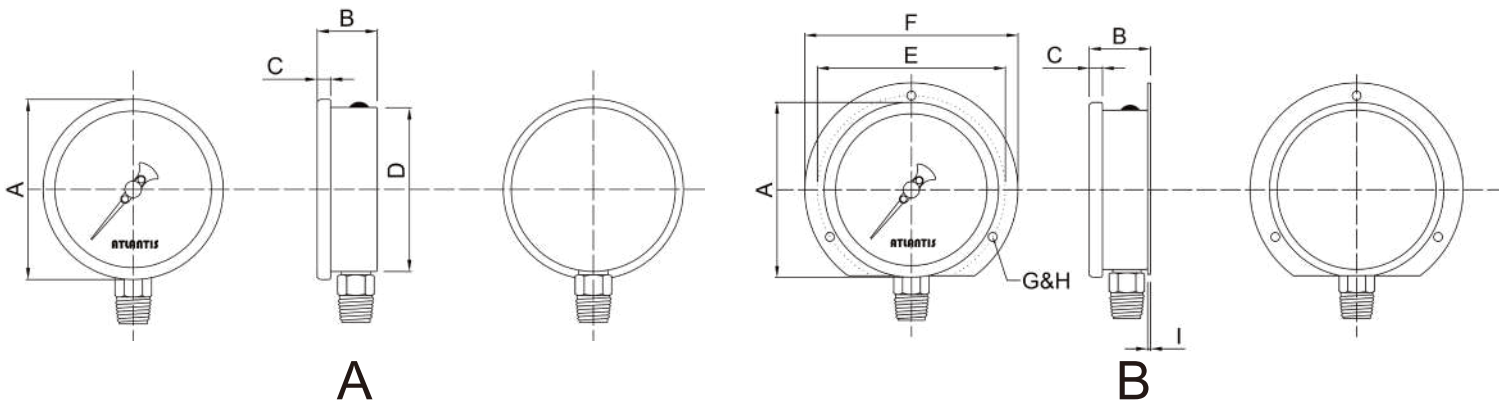


Due to the variety of customization, the picture is only for
 reference, please confirm the actual item with our sales.
 (If there is any change on specification, please take the
 latest version as standard.)

Features

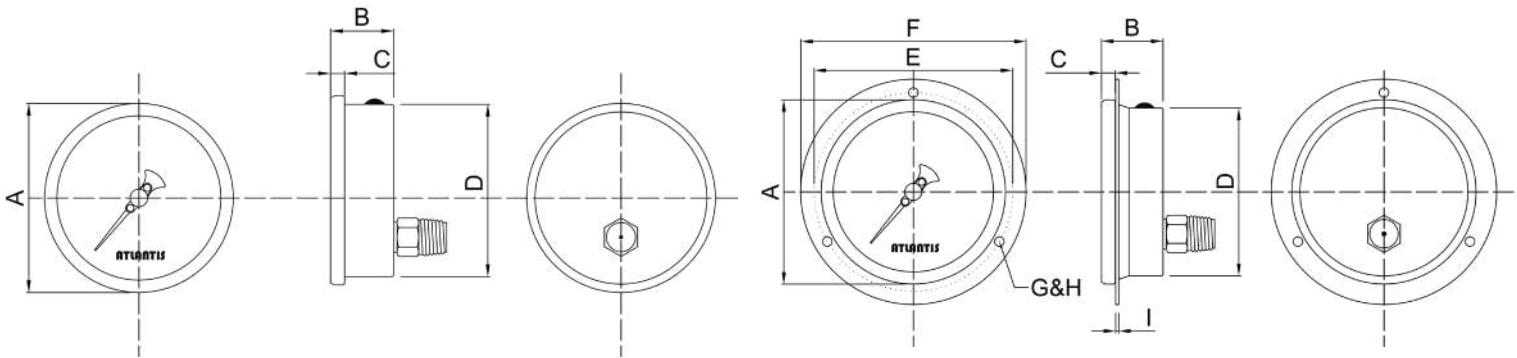
- OEM service
- Specially design for micro pressure measurement
- All stainless steel design
- Welded connection structure
- Minimum measurable micro pressure ±25 mmAq
 (Only available for 6")

Installation type



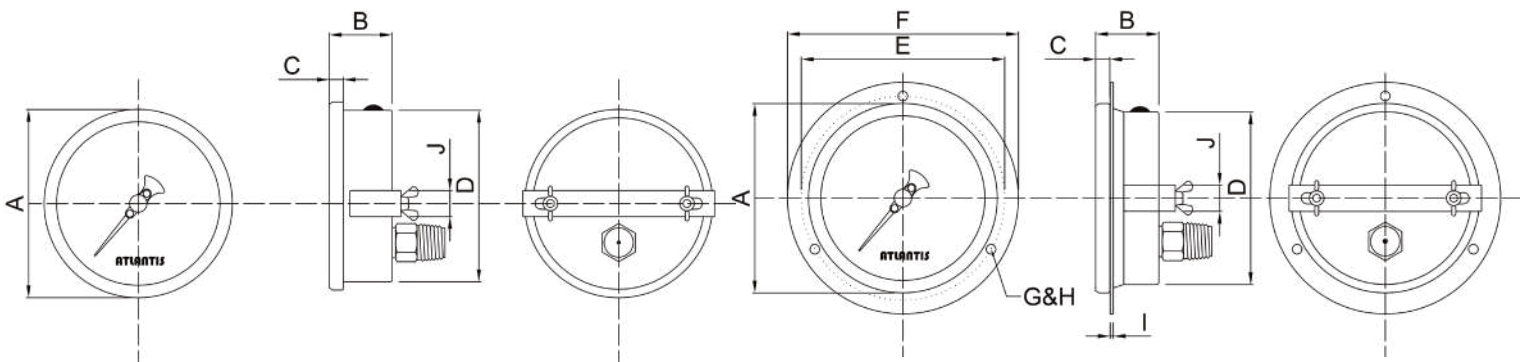
A

B



ADE

BDE



UDE

UBDE

Installation type	4"	6"
A	●	●
B	●	●
ADE	●	●
BDE	●	●
UDE	●	●
UBDE	●	●

How to order

MP-SUS All Stainless Steel Micro Pressure Gauge										
Std.	Spec.	Code	Item	Code	Item	Code	Item	Code	Item	
04	Size	04	4"	06	6"	—	—	—	—	
A	Installation type	A	Bottom mount	B	Bottom mount with flange	ADE	Back mount (Eccentric thread)	BDE	Back mount with flange (Eccentric thread)	
		UDE	Back mount with U-Clamp (Eccentric thread)	UBDE	Back mount with flange and U-Clamp (Eccentric thread)	—	—	—	—	
2	Thread size	2	1/4"	3	3/8"	4	1/2"	—	—	
N	Thread type	P	BSPT	N	NPT	F	PF	O	Others (please specify)	
Custom	Pressure range	Gauge pressure: 4" : 0...160 to 6000 mmAq 6" : 0...25 to 6000mmAq Negative pressure: -6000...0mmAq Compound pressure: 4" : ±80 to ±3000mmAq 6" : ±15 to ±3000mmAq Pressure unit on dial face : kPa, mbar, mmH ₂ O, mmAq, mmWC, inH ₂ O (special unit available upon request)								
B	Accuracy	A	±1.6%	B	±3%	—	—	—	—	
/D	Other requests	/A	Third party notarized documents			/B	Inspection report			
		/C	Tag			/D	Customized dial face (scale, color, unit, etc.)			
		/E	Case material SS316			/F	Dampened movement / oil cup			
		/G	Install a diaphragm seal			/H	Epoxy coating			
		/I	Internal stop pin for overpressure protection			/J	Special square nut A type			
		/K	Window - safety glass			/L	Indicator (red / green / yellow)			
		/M	Adjustable pointer			/N	Knife edge pointer			

Order example: MP-SUS - 04 - A - 2 - N - (0 to 500 mmAq) - B + /D