

**Main specifications**

## ▼Size

1.5" , 2" , 2.5" , 3" , 4" , 6" , 8"

## ▼Installation type

Bottom mount (A) /  
Bottom mount with flange(B) /  
Back mount (Centric thread) (ADC) /  
Back mount (Eccentric thread) (ADE) /  
Back mount with flange  
(Centric thread) (BDC) /  
Back mount with flange  
(Eccentric thread) (BDE) /  
Back mount with U-Clamp  
(Centric thread) (UDC) /  
Back mount with U-Clamp  
(Eccentric thread) (UDE) /  
Back mount with flange and  
U-Clamp (Centric thread) (UBDC) /  
Back mount with flange and  
U-Clamp (Eccentric thread) (UBDE)

## ▼Window

PC / Glass

Option: safety glass

## ▼Pressure connection

Material: copper plating

Thread size:

1/8" , 1/4" , 3/8" , 1/2"

Thread type:

BSPT, NPT, PF

## ▼Pressure range

Gauge pressure▼

0...0.6 to 1000 bar

Negative pressure▼

-1...0bar / -76...0cmHg

Compound pressure▼

-1...0 to 20bar

## ▼Applicable fluid

Liquid and gas that compatible with copper alloy

## ▼Ambient temperature

Dry

-40°C to +60°C

Glycerin-filled

-20°C to +60°C

Silicone oil-filled

-40°C to +60°C

## ▼Media temperature

Dry

+60°C

Glycerin

+60°C

+180°C is available made-to-order

## ▼Temperature drift

Every 12°C

max. error:  $\pm 0.3\%$  F.S

## ▼Protection level

IP54 (std.) / IP65 (option)

**Other specifications**

## ▼Ring material

Stainless steel

## ▼Ring mount

Crimp / Bayonet / Snap-in

## ▼Case material

SS 304

## ▼Pointer

Aluminum with black enamel

## ▼Dial face

Blue and black scale

Other pressure unit, scale & color available upon request

## ▼Measuring elements

Bourdon tube

Material: copper alloy

## ▼Design protection (option)

Blow out disk

## ▼Movement

Copper alloy

## ▼Accuracy

$\pm 2.0\%$  F.S. for  $\Phi 1.5"$  &  $2"$

$\pm 1.5\%$  F.S. for  $\Phi 2.5"$  ~  $8"$

## ▼Operating pressure

Stabilization 3/4\* full scale

Fluctuation 2/3\* full scale

Impulse 1\* full scale

## ▼Other requests (Option)

Third party notarized documents

Inspection report

Tag

Customized dial face (scale, color, unit, etc.)

Install a diaphragm seal

Dampened movement

Window - Safety glass

(Only available for size  $> 4"$  )

Peak hold pointer

Coating

External indicator (red, green, yellow)

Thread - chrome plated

Knife edge pointer

Adjustable pointer

(Only available for size  $> 4"$  )

Install a blow out back

High accuracy type

**Stainless Steel Case****Pressure Gauge****Model: SC****Introduction**

SC pressure gauge has various size and installation type for selection, which is suitable for measuring slight corrosive media that compatible with copper alloy. Particularly used in hydraulics, compressors, general mechanical engineering, pumps, water treatment plants.



Bottom mount

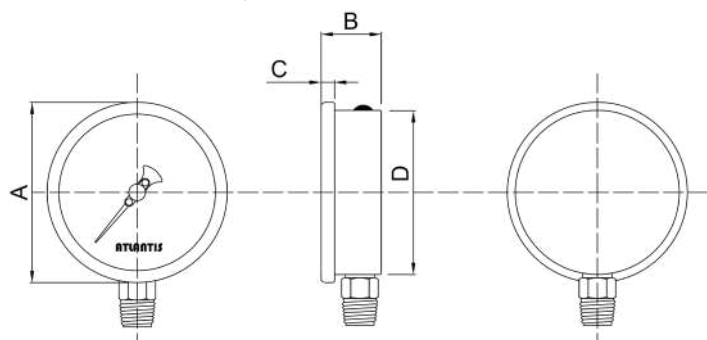


Due to the variety of customization, the picture is only for reference, please confirm the actual item with our sales. (If there is any change on specification, please take the latest version as standard.)

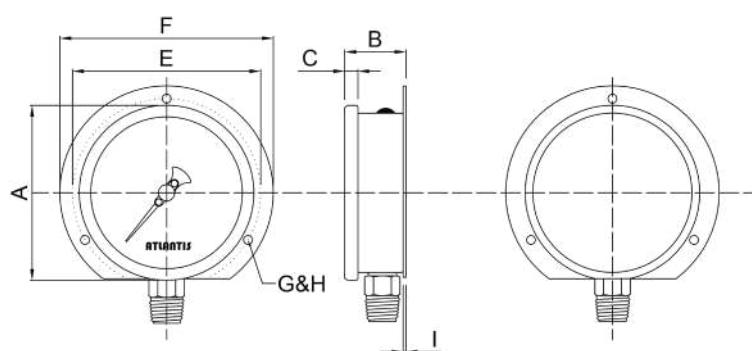
**Features**

- OEM service
- Stainless steel case pressure gauge for general application
- Various installation and thread type available for different application
- Filled with liquid to improve vibration-proof performance and service life (option)

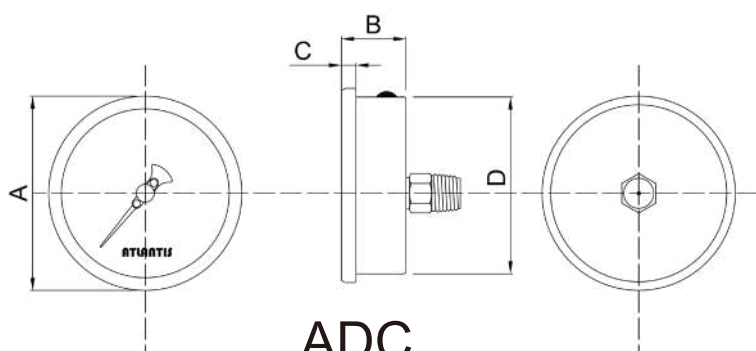
# Installation type



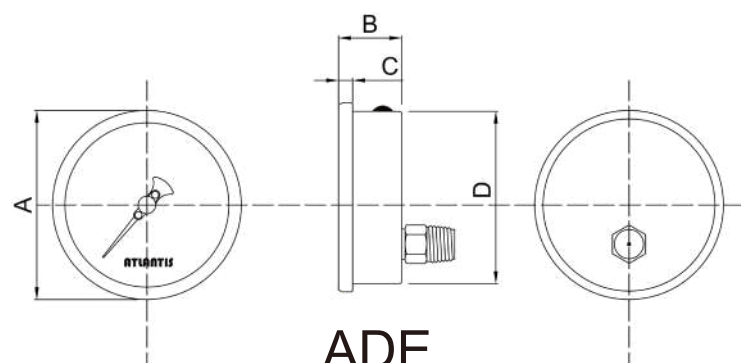
A



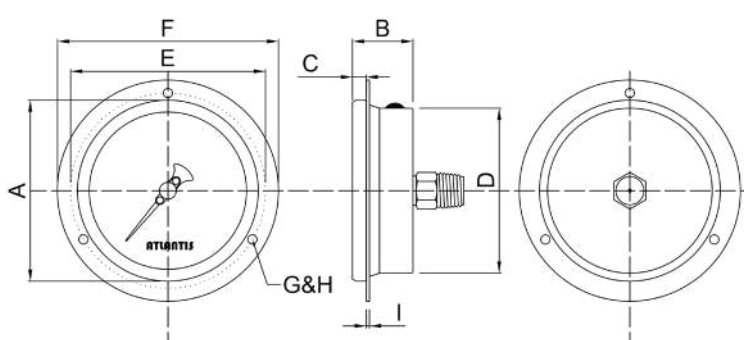
B



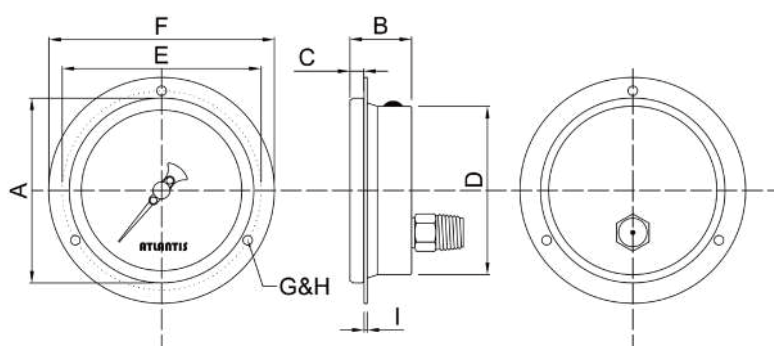
ADC



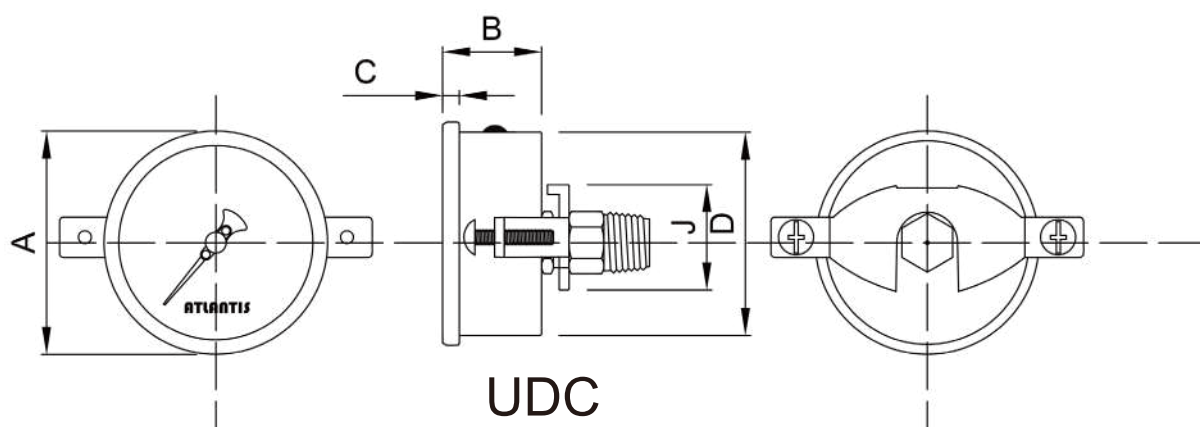
ADE



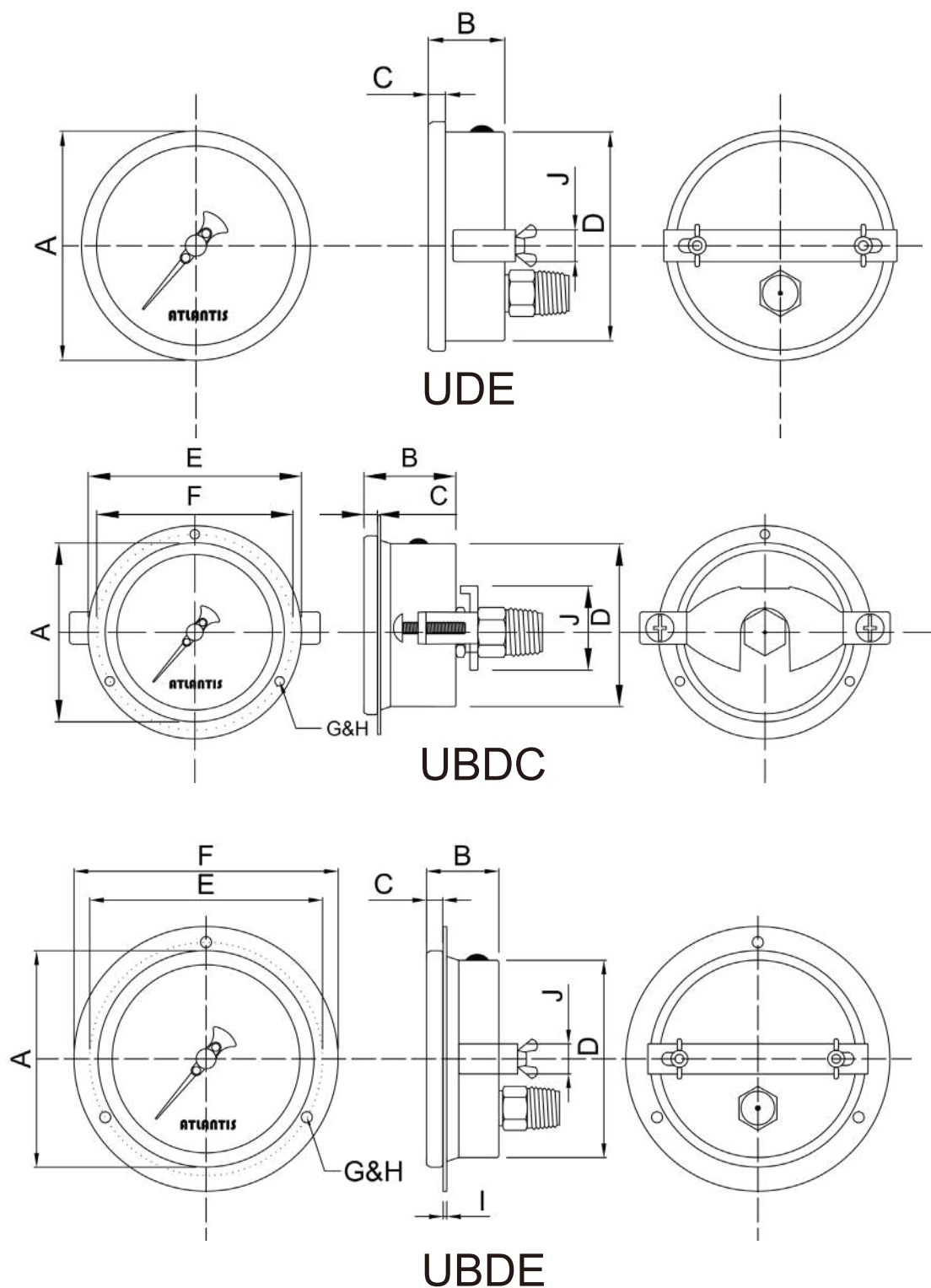
BDC



BDE



UDC



Size-Installation type table

Installation type	1.5"	2"	2.5"	3"	4"	6"	8"
A	●	●	●	●	●	●	●
B			●	●	●	●	●
ADC	●	●	●	●	●		
ADE					●		
BDC	●	●	●	●	●		
BDE				●	●	●	●
UDC	●	●	●	●			
UDE					●		
UBDC			●		●		
UBDE					●		

## How to order

SC Stainless Steel Case Pressure Gauge									
Std.	Spec.	Code	Item	Code	Item	Code	Item	Code	Item
04	Size	015	1.5"	02	2"	025	2.5"	03	3"
		04	4"	06	6"	08	8"	—	—
L	Liquid-filling	O	Dry	L	Glycerin	S	Silicone oil	N	Oil-free treatment
A	Installation type	A	Bottom mount	B	Bottom mount with flange	ADC	Back mount (Centric thread)	ADE	Back mount (Eccentric thread)
		BDC	Back mount with flange (Centric thread)	BDE	Back mount with flange (Eccentric thread)	UDC	Back mount with U-Clamp (Centric thread)	UDE	Back mount with U-Clamp (Eccentric thread)
		UBDC	Back mount with flange and U-Clamp (Centric thread)	UBDE	Back mount with flange and U-Clamp (Eccentric thread)	—	—	—	—
3	Thread size	1	1/8"	2	1/4"	3	3/8"	4	1/2"
P	Thread type	P	BSPT	N	NPT	F	PF	O	Others
Custom	Pressure range	Gauge pressure — (0...0.6 to 1000bar) Negative pressure — (-1...0bar) Compound pressure — (-1...0...0.6 to 20bar) Custom pressure unit scale (psi, bar, kPa, kg/cm <sup>2</sup> , MPa, inHg, mmHg, cmHg, etc...), single / dual scale							
54	Protection level	54	IP54	65	IP65	—	—	—	—
/B	Other requests	/A	Third party notarized document			/B	Inspection report (issued by Re-Atlantis)		
		/C	Tag			/D	Customized dial face (scale, color, unit, etc.)		
		/E	Install a diaphragm seal			/F	Dampened movement		
		/G	Window – Safety glass (Only available for size > 4" )			/H	Peak hold pointer		
		/I	Coating			/J	External indicator (red, green, yellow)		
		/K	Thread - chrome plated			/L	Knife edge pointer		
		/M	Adjustable pointer (Only available for size > 4" )			/N	Install a blow out back		
		/O	High accuracy type			—	—		

Order example: SC - 04 - L - A - 3 - P - (0...10bar) - 54 - /B