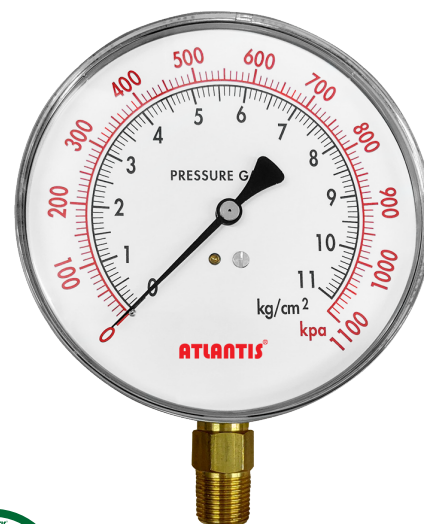


# 4.5 / 5" Stainless Steel Case Pressure Gauge With Zero Adjustment

## Model: ZSC-4.5

### Introduction

This special 4.5" black steel case pressure gauge with zero adjustment is suitable for general engineering or other application that required field pointer calibration.



Due to the variety of customization, the picture is only for reference, please confirm the actual item with our sales. (If there is any change on specification, please take the latest version as standard.)

Main Specifications	Other Specifications
<b>▼Size</b> 4.5" (125mm)	<b>▼Ring</b> Stainless steel
<b>▼Installation type</b> Bottom mount (A)	<b>▼Ring fixed</b> Snap-in / Screw fixed
<b>▼Window</b> PC	<b>▼Case</b> SS304
<b>▼Pressure connection</b> Material: Copper alloy 1/4" PT (Standard) 1/4" NPT (Option) 3/8" PT (Option) Other thread specs can be customized upon request	<b>▼Pointer</b> Aluminum with black enamel
<b>▼Pressure range</b> 0...2 to 28bar	<b>▼Dial face</b> Red and black scale Adjustable screw on dial face Pressure unit, scale, and color can be customized upon request
<b>▼Applicable fluid</b> Liquid and gas that compatible with copper alloy	<b>▼Measuring elements</b> Bourdon tube Material: copper alloy
<b>▼Ambient temperature</b> -40°C to +60°C	<b>▼Movement</b> Copper alloy
<b>▼Fluid temperature</b> +60°C	<b>▼Accuracy</b> ±2.5%F.S. (Standard) ±1.6%F.S. (Option)
<b>▼Temperature error</b> Every 12°C max. error±0.3% F.S	<b>▼Operating pressure</b> Stabilization 3/4* full scale Fluctuation 2/3* full scale Impulse 1* full scale
<b>▼Protection level</b> IP43	

## Features

- OEM services
- Special size 4.5/5"
- Stainless steel case design
- Adjustable screw for field pointer calibration

## How to order

ZSC-4.5 4.5 / 5" Stainless Steel Case Pressure Gauge With Zero Adjustment									
Std.	Spec.	Code	Item	Code	Item	Code	Item	Code	Item
B	Connection material	B	Copper alloy	O	Others	-	-	-	-
B	Bourdon tube material	B	Copper alloy	O	Others	-	-	-	-
2P	Thread size	2P	1/4" PT	2N	1/4" NPT	3P	3/8" PT	O	Others
Custom	Pressure range	0...2 to 28bar Pressure unit (psi, bar, kPa, kg/cm2, MPa, inHg, mmHg, cmHg, etc...)&single / dual scale can be customized upon request							
A	Accuracy	A	±2.5%F.S.	B	±1.6% F.S.	-	-	-	-
/B	Other requests	/A	Third party notarized documents			/B	Inspection report		
		/C	Tag			/D	Customized dial face (scale, color, dial, etc.)		
		/E	Case material SS316			/F	Epoxy coating		
		/G	Window – Safety glass			-	-		

Order example: ZSC-4.5 - B - B - 2P - (0...2 to 10bar) - A - /B